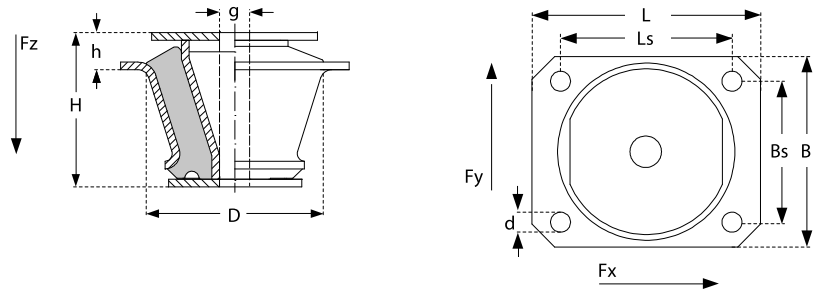
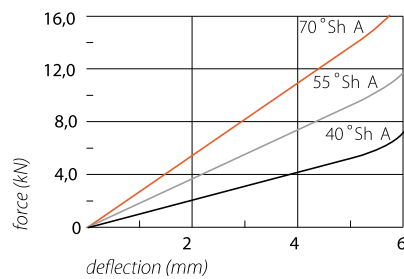


# Conical dampers

Art.Code	L (mm)	Ls (mm)	B (mm)	Bs (mm)	d (mm)	H (mm)	h (mm)	D (mm)	g (mm)
13100140	120	90	100	74	11	81	20	93	16
13100155	120	90	100	74	11	81	20	93	16
13100170	120	90	100	74	11	81	20	93	16



Load Fz



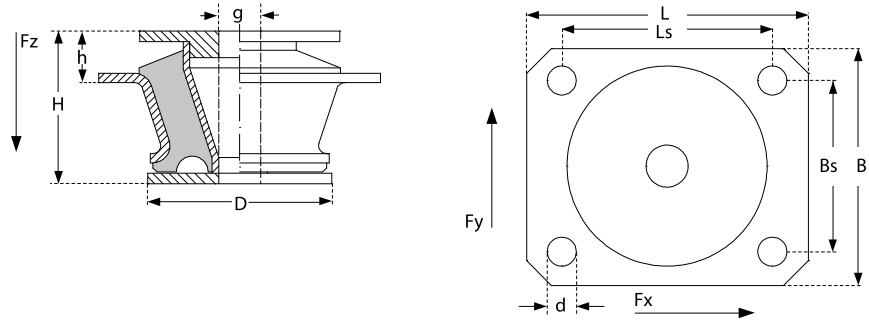
Conical dampers are supplied with 2 stop discs.

**Material:** NR (Natural Rubber)  
**Rubber shore hardness:** 40° Shore A  
 55° Shore A  
 70° Shore A

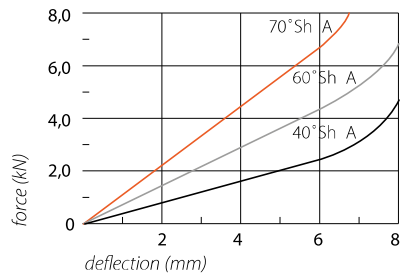


# Conical dampers

Art.Code	L (mm)	Ls (mm)	B (mm)	Bs (mm)	d (mm)	H (mm)	h (mm)	D (mm)	g (mm)
13100540	107	80	90	65	11	58	21,5	78	16
13100560	107	80	90	65	11	58	21,5	78	16
13100570	107	80	90	65	11	58	21,5	78	16



Load Fz



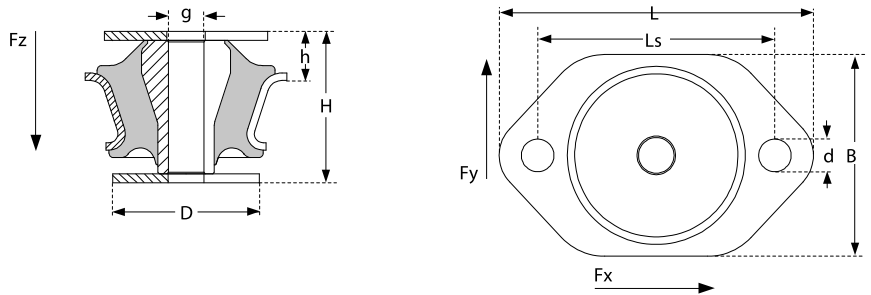
Conical dampers are supplied with 2 stop discs.

**Material:** NR (Natural Rubber)  
**Rubber shore hardness:** 40° Shore A  
 55° Shore A  
 70° Shore A

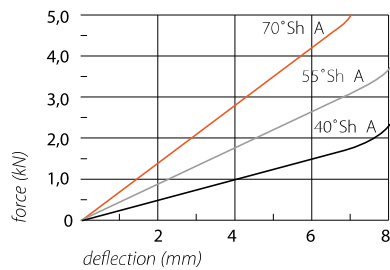


# Conical dampers

Art.Code	L (mm)	Ls (mm)	B (mm)	g (mm)	d (mm)	H (mm)	h (mm)	D (mm)
13300240	106	80	68	12,1	11	51	16,5	60
13300255	106	80	68	12,1	11	51	16,5	60
13300270	106	80	68	12,1	11	51	16,5	60



Load Fz



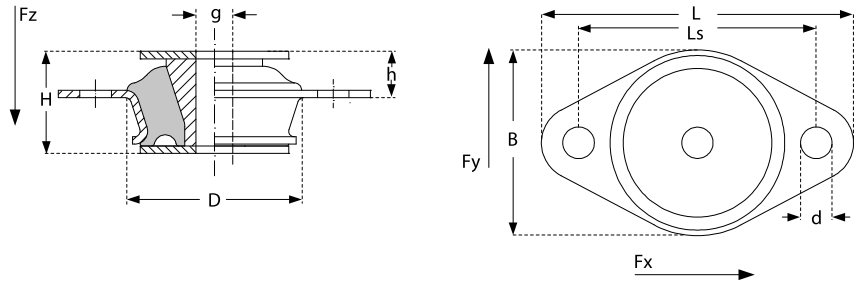
Conical dampers are supplied with 2 stop discs.

**Material:** NR (Natural Rubber)  
**Rubber shore hardness:** 40° Shore A  
 55° Shore A  
 70° Shore A

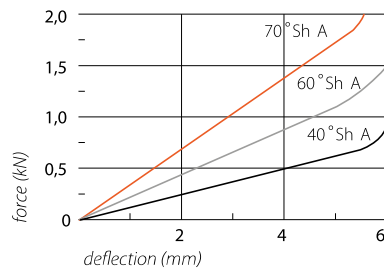


# Conical dampers

Art.Code	L (mm)	Ls (mm)	B (mm)	g (mm)	d (mm)	H (mm)	h (mm)	D (mm)
13500140	84	64	50	8	6,5	27,5	12	46
13500160	84	64	50	8	6,5	27,5	12	46
13500170	84	64	50	8	6,5	27,5	12	46



Load Fz



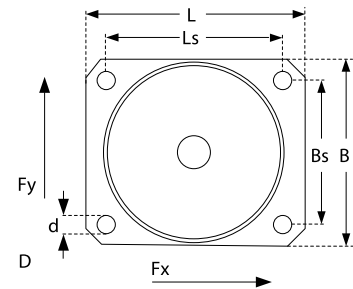
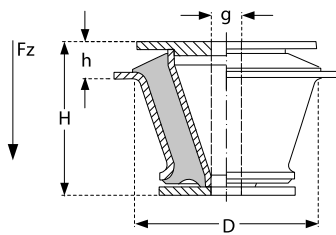
Conical dampers are supplied with 2 stop discs.

**Material:** NR (Natural Rubber)  
**Rubber shore hardness:** 40° Shore A  
 55° Shore A  
 70° Shore A

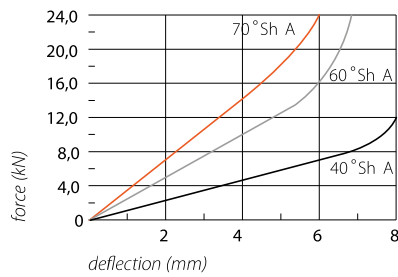


# Conical dampers

Art.Code	L (mm)	Ls (mm)	B (mm)	Bs (mm)	d (mm)	H (mm)	h (mm)	D (mm)	g (mm)
13600140	140	112	120	92	11	95	23	109	20
13600160	140	112	120	92	11	95	23	109	20
13600170	140	112	120	92	11	95	23	109	20



Load Fz



Conical dampers are supplied with 2 stop discs.

**Material:** NR (Natural Rubber)  
**Rubber shore hardness:** 40° Shore A  
 55° Shore A  
 70° Shore A

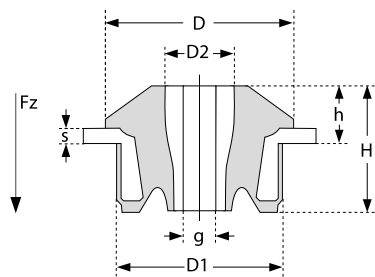


# Conical dampers

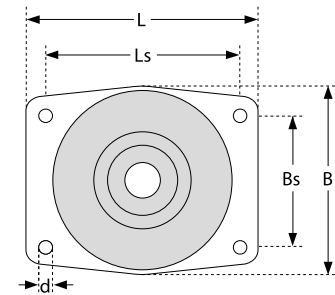
Heavy Duty

Art.Code	D (mm)	D1 (mm)	D2 (mm)	g (mm)	H (mm)	h (mm)	S (mm)	L (mm)	Ls (mm)	Bs (mm)	B (mm)	d (mm)
P1550A45	139	124	40	25	100	46	12,5	172	144	100	150	11

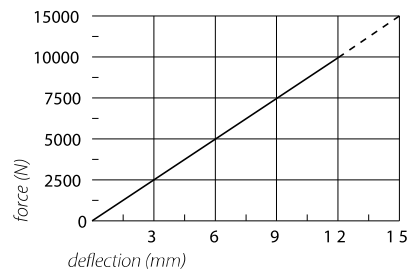
P1550A45



P1550A45



Load Fz



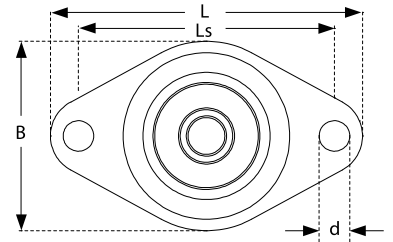
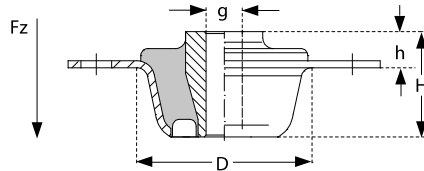
- Robust construction
- Fail safe if mounted with stop discs
- Suitable for absorbing heavy loads and vibrations



# Conical dampers

Art.Code	L (mm)	Ls (mm)	B (mm)	g (mm)	d (mm)	H (mm)	h (mm)	D (mm)
13201236	89	73	54	10,5	8,7	30	10,3	50
13201260	89	73	54	10,5	8,7	30	10,3	50

**Material:** NR (Natural Rubber)  
**Rubber shore hardness:** 40° en 60° Shore A



Load Fz

